

BOX SCORE: \*\*\* FINAL \*\*\*

Date: 03-26-88 Site: State Tourney, Frankfort Attendance: 4,270

Team: Oldham County

NO.	NAME	TOTAL FG		3-POINT		FT	FTA	REB			PF	TP	A	TO	BLK	S	MIN
		FG	FGA	FG	FGA			O	D	T							
41	Harned, Terri	4	7	0	0	1	1	0	3	3	1	9	3	1	0	0	31
44	Godman, Liz	6	11	0	0	0	0	4	6	10	1	12	0	0	0	0	31
45	Edwards, Heather	2	10	0	0	0	0	2	6	8	3	4	0	1	1	0	29
11	Prather, Charla	0	2	0	1	0	0	0	1	1	0	0	3	7	0	0	29
31	Francis, Tina	0	1	0	0	0	0	0	0	0	0	0	1	1	0	0	13
03	Lewis, Diane	2	2	0	0	0	0	0	2	2	0	4	0	4	0	0	12
33	O'Bryan, Jenny	1	5	1	3	2	2	0	0	0	0	5	0	4	0	0	13
23	Holloway, S.	0	1	0	1	0	0	1	0	1	0	0	0	1	0	0	1
21	Martin, Bethany	0	0	0	0	0	0	0	0	0	0	0	0	0	0	0	1
TEAM								1		1				1			
TOTALS		15	39	1	5	3	3	8	18	26	5	34	7	20	1	0	160

Percentages:	Game-----	FG	15/ 39	38.5%	3-PT.	1/ 5	20.0%	FT	3/ 3	100.0%
	Period 1		3/ 9	33.3%		0/ 0	0.0%		0/ 0	0.0%
	Period 2		2/ 8	25.0%		1/ 2	50.0%		0/ 0	0.0%
	Period 3		5/ 9	55.6%		0/ 0	0.0%		1/ 1	100.0%
	Period 4		5/ 14	35.7%		0/ 3	0.0%		2/ 2	100.0%

Team: Southern

NO.	NAME	TOTAL FG		3-POINT		FT	FTA	REB			PF	TP	A	TO	BLK	S	MIN
		FG	FGA	FG	FGA			O	D	T							
24	Harrison, Lisa	11	22	0	1	0	0	3	6	9	0	22	2	2	2	4	30
50	Collins, Cindy	3	8	0	0	0	0	1	3	4	2	5	1	0	0	0	25
55	Moore, Mioshi	1	3	0	0	2	2	0	1	1	1	4	0	0	0	1	25
04	Burden, Michelle	5	8	0	0	0	0	1	2	3	2	10	8	1	0	3	30
21	Woods, Tina	4	7	0	0	3	4	2	1	3	1	11	3	3	1	3	30
34	Grant, Steph.	1	2	0	0	0	0	0	3	3	2	2	1	0	0	0	10
05	Andres, Kim	0	0	0	0	0	0	0	0	0	0	0	1	0	0	0	3
35	Kiggins, Pam	1	1	0	0	0	0	0	1	1	0	2	0	1	0	1	2
23	Hoffman, Julie	0	0	0	0	0	0	0	1	1	0	0	0	1	0	0	2
10	Davis, Debbie	0	0	0	0	0	0	0	0	0	0	0	0	0	0	0	1
12	Burden, D.	0	0	0	0	0	0	0	0	0	0	0	0	0	0	0	1
15	Burden, Melissa	0	0	0	0	0	0	0	0	0	0	0	0	0	0	0	1
TEAM																	
TOTALS		26	51	0	1	5	6	7	18	25	8	57	16	8	3	12	160

Percentages:	Game-----	FG	26/ 51	51.0%	3-PT.	0/ 1	0.0%	FT	5/ 6	83.3%
	Period 1		7/ 10	70.0%		0/ 0	0.0%		3/ 4	75.0%
	Period 2		4/ 18	22.2%		0/ 0	0.0%		2/ 2	100.0%
	Period 3		7/ 12	58.3%		0/ 0	0.0%		0/ 0	0.0%
	Period 4		8/ 12	66.7%		0/ 1	0.0%		0/ 0	0.0%

OFFICIALS: Ken Catron, Lois Holmes, Alt.-S. Higdon

Technical: None

SCORE BY PERIODS					
Oldham County	6	5	11	12	= 34
Southern	17	10	14	16	= 57



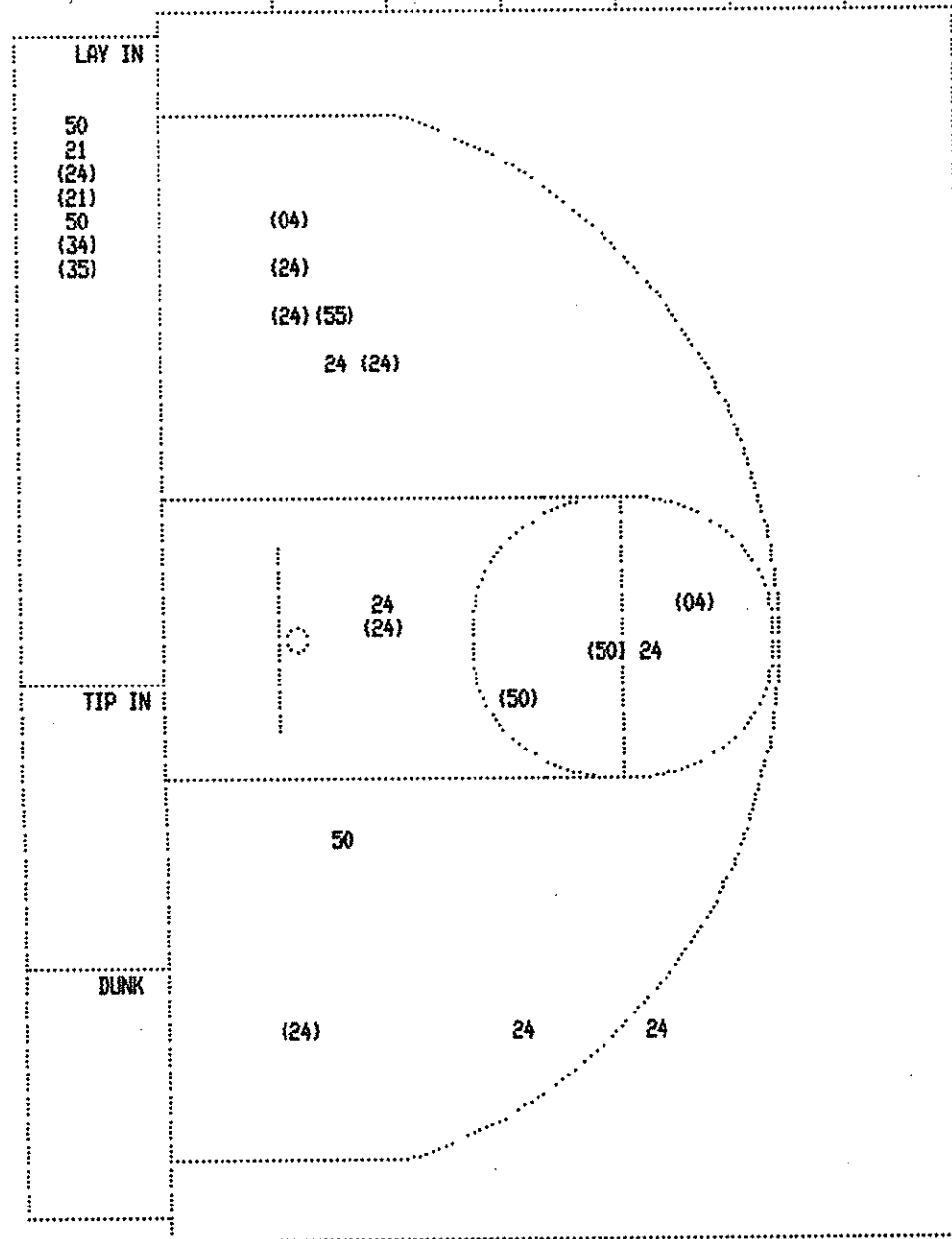
Oldham County "Lady Colonels" vs Southern "Lady Trojans"  
 2nd Half Play by Play

Tip off at 8:00 p.m. on 03/26/88 at State Tourney, Frankfort  
 Produced by the K.H.S.A.A. Stat Crew with FINAL III™

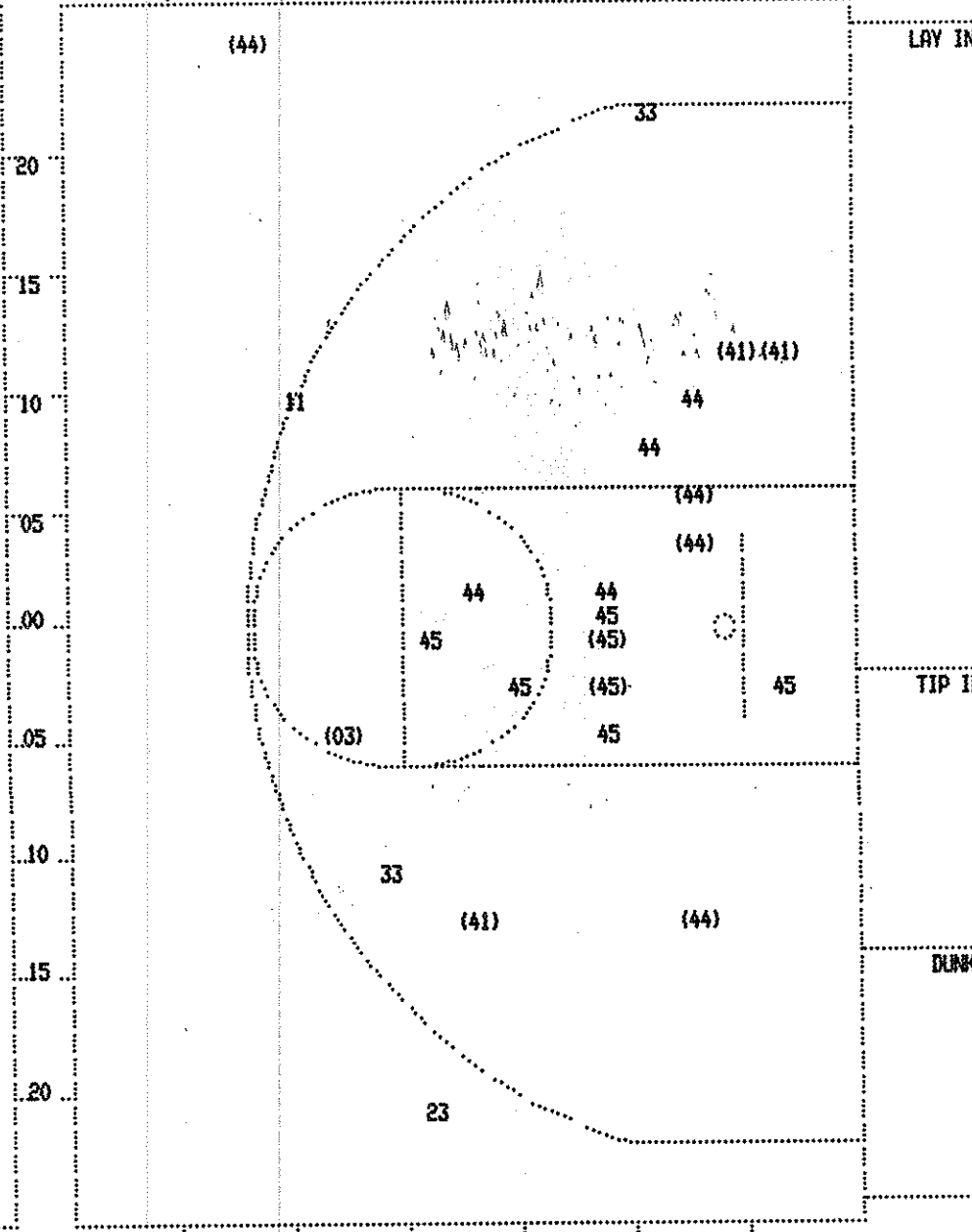
PAGE : 1

Player	Team	Southern	Time	Score	Oldham County	Player	Team
Harrison, Lisa	Collins, Cindy	Moore, Mioshi, Burden, Michelle, Woods, Tina			Harned, Terri, Godman, Liz, Edwards, Heather, Prather, Charla, O'Bryan, Jenny		
					Ball to Lady Colonels		
6-13	46.1%	12-31 38.7%	12 ft Right Side Jump shot by Harrison, Lisa	3 7:10 27-13*	16 ft Right Side Jump shot by Harned, Terri	2-5	40.0% 6-18 33.3%
			Sub In: Grant, Steph. Out: Collins, Cindy	3 5:04 *29-13			
3-7	42.8%	13-33 39.3%	18 ft Right Base Line Jump shot by Burden, Michelle	3 4:37 29-15*	4 ft Lane Follow by Edwards, Heather	2-4	50.0% 7-21 33.3%
			Assist by Woods, Tina	3 4:06			
			Foul on Moore, Mioshi	3 4:02	Sub In: Lewis, Diane Out: Francis, Tina		
				3 4:02 *31-15			
1-3	33.3%	14-35 40.0%	14 ft Right Base Line Jump shot by Moore, Mioshi	3 3:23			
				3 2:44 31-17*	16 ft Circle Jump shot by Lewis, Diane	2-2	100% 8-22 36.3%
7-16	43.7%	15-37 40.5%	3 ft Lane Follow by Harrison, Lisa	3 2:18 *33-17			
			Foul on Collins, Cindy	3 1:30 *35-17			
4-8	50.0%	16-38 42.1%	16 ft Circle Jump shot by Burden, Michelle	3 1:10			
			Assist by Grant, Steph.	3 0:50 *37-17			
				3 0:32 37-19*	13 ft Left Base Line Jump shot by Harned, Terri	3-6	50.0% 9-25 36.0%
			Foul on Grant, Steph.	3 0:30	Assist by Prather, Charla		
			Sub In: Collins, Cindy Out: Moore, Mioshi	3 0:30			
			Sub In: Andres, Kim Out: Grant, Steph.	3 0:30			
8-17	47.0%	17-39 43.5%	14 ft Right Base Line Jump shot by Harrison, Lisa	3 0:30 37-20*	Harned, Terri, 1 Free Throw made	1-1	100% 1-1 100%
			Assist by Collins, Cindy	3 0:02 *39-20			

SECOND HALF SHOT CHART Produced by the K.H.S.A.A. Stat Crew with FINAL III™



Southern					Player				
Player					Player				Player
24 - Harrison, C	6/11	54.5%	34 - Grant, Ste	1/1	100.0%				
50 - Collins, C	2/5	40.0%	35 - Kiggins, P	1/1	100.0%				
55 - Moore, Mic	1/1	100.0%							
04 - Burden, Mic	2/2	100.0%							
21 - Woods, Tin	1/2	50.0%							
Layups	1-9 Ft	10-15 Ft	Over 15 Ft	3 Pointers	Total				
4/7	2/4	4/6	4/5	0/1	14/23				
57.1%	50.0%	66.7%	80.0%	0.0%	60.9%				



Oldham County					Player				
Player					Player				Player
41 - Harned, Te	3/3	100.0%	23 - Holloway,	0/1	0.0%				
44 - Godman, Li	4/8	50.0%	33 - O'Bryan, J	0/2	0.0%				
45 - Edwards, He	2/7	28.5%							
11 - Prather, C	0/1	0.0%							
03 - Lewis, Dia	1/1	100.0%							
Layups	1-9 Ft	10-15 Ft	Over 15 Ft	3 Pointers	Total				
1/1	4/10	3/6	2/3	0/3	10/23				
100.0%	40.0%	50.0%	66.7%	0.0%	43.5%				

BOX SCORE: \* OFFICIAL FIRST HALF \* Date: 03-26-88 Site: State Tourney, Frankfort Attendance: 4,270

Team: Oldham County

NO.	NAME	TOTAL FG		3-POINT		FT	FTA	REB			PF	TP	A	TO	BLK	S	MIN
		FG	FGA	FG	FGA			O	D	T							
41	Harwed, Terri	1	4	0	0	0	0	0	2	2	1	2	0	0	0	0	16
44	Godman, Liz	1	4	0	0	0	0	1	6	7	1	2	0	0	0	0	16
45	Edwards, Heather	1	3	0	0	0	0	0	3	3	2	2	0	1	1	0	12
11	Prather, Charla	0	1	0	0	0	0	0	1	1	0	0	2	6	0	0	14
31	Francis, Tina	0	1	0	0	0	0	0	0	0	0	0	1	1	0	0	9
03	Lewis, Diane	1	1	0	0	0	0	0	1	1	0	2	0	3	0	0	5
33	O'Bryan, Jenny	1	3	1	2	0	0	0	0	0	0	3	0	1	0	0	8
TEAM								1	1	1							
TOTALS		5	17	1	2	0	0	2	13	15	4	11	3	12	1	0	80
Percentages:		HALF-----		FG	5/ 17	29.4%	3-PT.	1/ 2	50.0%	FT	0/ 0	0.0%	Deadball Rebounds		0/ 0	0.0%	
		Period 1			3/ 9	33.3%		0/ 0	0.0%		0/ 0	0.0%			0/ 0	0.0%	
		Period 2			2/ 8	25.0%		1/ 2	50.0%		0/ 0	0.0%			0/ 0	0.0%	

Team: Southern

NO.	NAME	TOTAL FG		3-POINT		FT	FTA	REB			PF	TP	A	TO	BLK	S	MIN
		FG	FGA	FG	FGA			O	D	T							
24	Harrison, Lisa	5	10	0	0	0	0	1	3	4	0	10	1	0	2	3	15
50	Collins, Cindy	1	3	0	0	0	0	1	2	3	0	2	0	0	0	0	15
55	Moore, Mioshi	0	2	0	0	2	2	0	1	1	0	2	0	0	0	0	13
04	Burden, Michelle	2	6	0	0	0	0	1	2	3	1	4	6	1	0	3	16
21	Woods, Tina	3	5	0	0	3	4	1	1	2	1	9	2	2	1	2	16
34	Grant, Steph.	0	1	0	0	0	0	0	1	1	1	0	0	0	0	0	5
TEAM								1	1	1							
TOTALS		11	27	0	0	5	6	4	10	14	3	27	9	3	3	8	80
Percentages:		HALF-----		FG	11/ 27	40.7%	3-PT.	0/ 0	0.0%	FT	5/ 6	83.3%	Deadball Rebounds		3/ 4	75.0%	
		Period 1			6/ 9	66.7%		0/ 0	0.0%		3/ 4	75.0%			2/ 2	100.0%	
		Period 2			4/ 18	22.2%		0/ 0	0.0%		2/ 2	100.0%					

OFFICIALS: Ken Catron, Lois Holmes, Alt. -S. Higdon  
 Technicals: None

SCORE BY PERIODS  
 Oldham County 6 5 = 11  
 Southern 15 10 = 27

Produced by the K.H.S.A.A. Stat Crew with FINAL III\*\*

Oldham County "Lady Colonels" vs Southern "Lady Trojans"  
1st Half Play by Play

Tip off at 8:00 p.m. on 03/26/88 at State Tourney, Frankfort  
Produced by the K.H.S.A.A. Stat Crew with FINRL III™

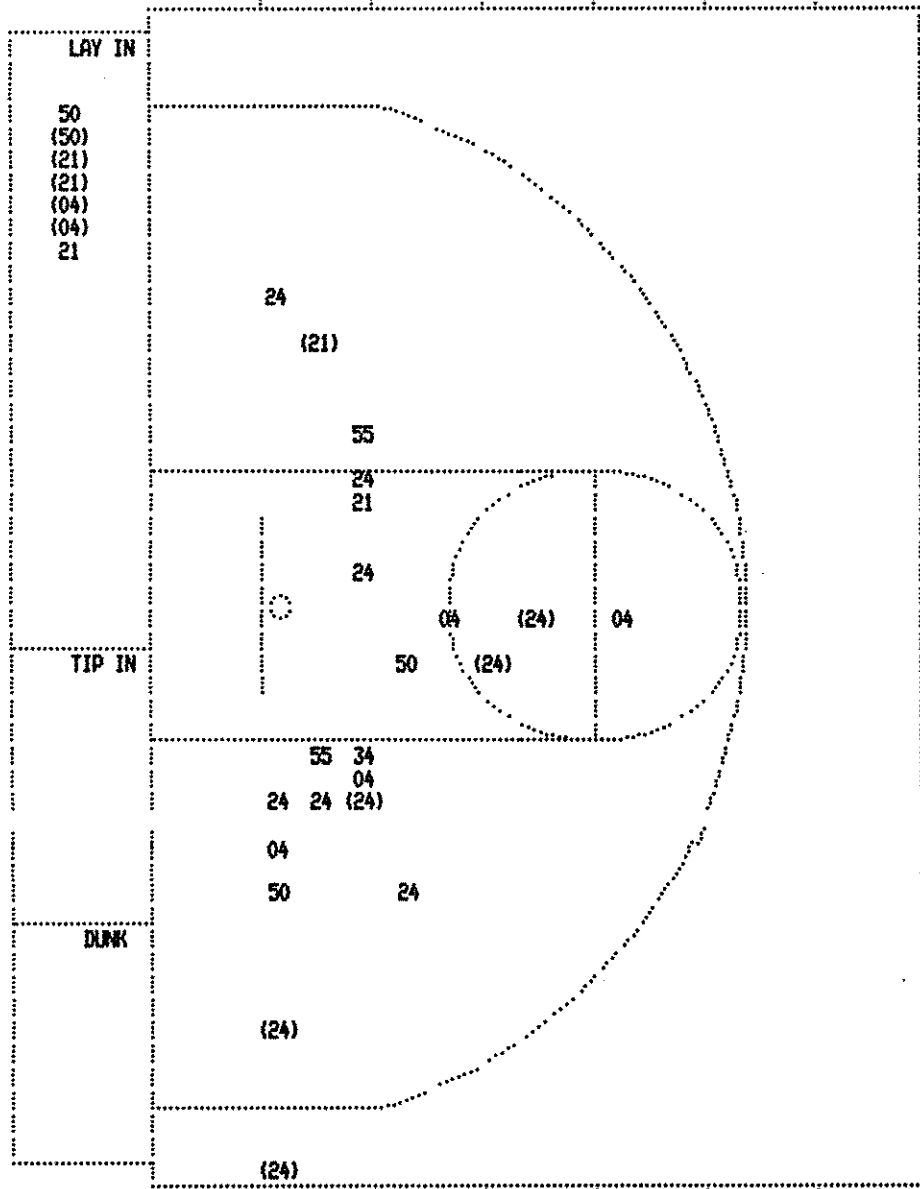
PAGE : 2

Player	Team	Southern
Harrison, Lisa	Collins, Cindy	Moore, Mioshi, Burden, Michelle, Woods, Tina
3-4	75.0%	5-6 83.3%
1-2	50.0%	8-14 57.1%
1	6	Woods, Tina, 2 Free Throws made both Layup Off Fast Break by Burden, Michelle Assist by Woods, Tina
4-7	57.1%	9-16 56.2%
5	7	Sub In: Grant, Steph. Out: Moore, Mioshi 8 ft Lane Turnaround by Harrison, Lisa Assist by Burden, Michelle
2-3	66.6%	10-18 55.5%
2	8	Layup Off Fast Break by Burden, Michelle Assist by Woods, Tina
1	2	Foul on Grant, Steph. Sub In: Moore, Mioshi Out: Collins, Cindy
5-10	50.0%	11-23 47.8%
6	9	10 ft Lane Turnaround by Harrison, Lisa Assist by Burden, Michelle Sub In: Collins, Cindy Out: Harrison, Lisa Foul on Burden, Michelle
1	3	

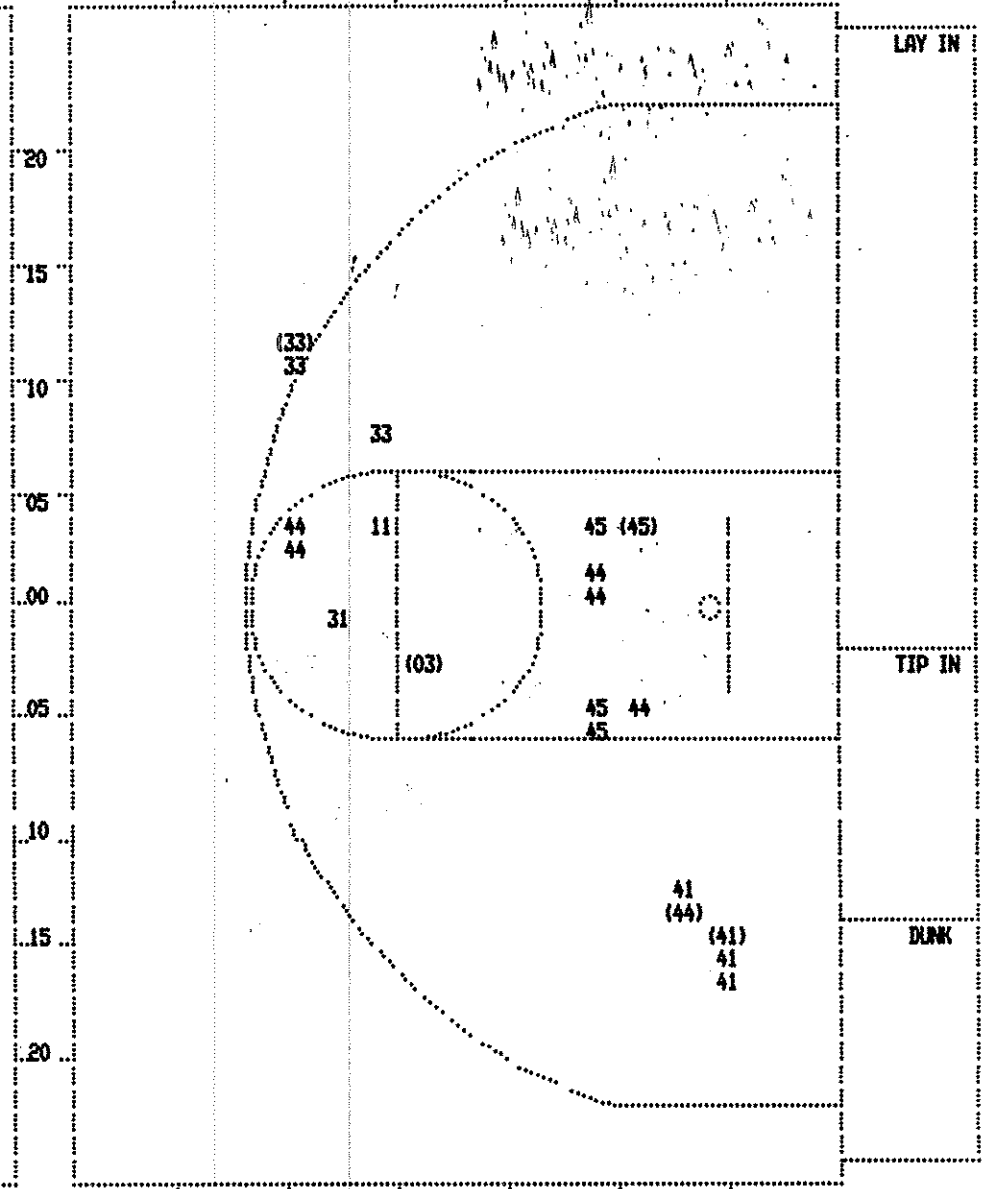
Time	Score	Oldham County	Player	Team
		Harned, Terri, Godman, Liz, Edwards, Heather, Prather, Charla, Francis, Tina		
		Ball to Lady Colonels		
2 7:50		Sub In: O'Bryan, Jenny Out: Edwards, Heather		
2 6:52		Foul on Harned, Terri	2	3
2 6:52		Sub In: Edwards, Heather Out: Francis, Tina		
2 6:52	*19-6			
2 5:58	*21-6			
2 5:40	21-9*	3 pt 22 ft Left Angle Jump shot by O'Bryan, Jenny Assist by Prather, Charla	1-1	100% 4-12 33.3%
2 5:09				2
2 5:09	*23-9			
2 3:43	*25-9			
2 3:30	25-11*	12 ft Right Base Line Jump shot by Godman, Liz Assist by Prather, Charla	1-4	25.0% 5-14 35.7%
2 2:26			2	3
2 2:26				
2 2:11		Sub In: Lewis, Diane Out: Prather, Charla		
2 1:23		Foul on Godman, Liz	1	4
2 1:09	*27-11			
2 0:31				
2 0:04				



FIRST HALF SHOT CHART Produced by the K.H.S.A.A. Stat Crew with FINAL III™



Southern			Player		
Player	Shots	Percentage	Player	Shots	Percentage
24 - Harrison, C	5/11	45.4%	34 - Grant, Ste	0/1	0.0%
50 - Collins, C	1/4	25.0%			
55 - Moore, Mio	0/2	0.0%			
04 - Burden, Mic	2/6	33.3%			
21 - Woods, Tin	3/5	60.0%			
Layups	1-9 Ft	10-15 Ft	Over 15 Ft	3 Pointers	Total
6 / 8	2 / 13	2 / 7	1 / 1		11 / 29
75.0%	15.4%	28.6%	100.0%		37.9%



Oldham County					Player				
Player	Shots	Percentage	Player	Shots	Percentage	Player	Shots	Percentage	Player
41 - Harned, Te	1/4	25.0%	03 - Lewis, Dia	1/1	100.0%				
44 - Godman, Li	2/6	33.3%	33 - O'Bryan, J	1/3	33.3%				
45 - Edwards, He	1/4	25.0%							
11 - Prather, C	0/1	0.0%							
31 - Francis, T	0/1	0.0%							
Layups	1-9 Ft	10-15 Ft	Over 15 Ft	3 Pointers	Total				
1 / 7	3 / 6	1 / 5	1 / 2		6 / 20				
14.3%	50.0%	20.0%	50.0%		30.0%				



# ALL TOURNAMENT

STEPHANIE GOSSUM v MARSHALL  
MONEK DEAN v MANUAL  
JILL NICKERSON v BOONE Co.  
MISSY CARTER v OHIO Co.  
JENNIFER BERRYMAN v GEO. ROG. CLAR  
TAMMY WALKER v HENRY CLAY  
KIM JONES v CLAY COUNTY  
AMY DAVIS v BOONE COUNTY  
TERRY HARNED v OLDHAM COUNTY  
LIZ GODMAN v OLDHAM COUNTY  
CINDY COLLINS v SOUTHERN  
LISA HARRISON v SOUTHERN

MVP

LISA HARRISON v SOUTHERN  
KHSAA-DAWAHARES SCHOLARSHIP  
SARAH MURPHY - BOONE COUNTY  
FRANKFORT MOST COMMITTEED SCHOLARSHIP  
CANDACE STURGILL v FLEMING NEON  
J.B. MANSFIELD AWARD  
CHANIN GOLLOCK v EAST HARDIN